

GP360D

Ground lowering, anti-vandal, robust and easy-to-use **single axle mobile** welfare accommodation unit.



STANDARD

MOBILE

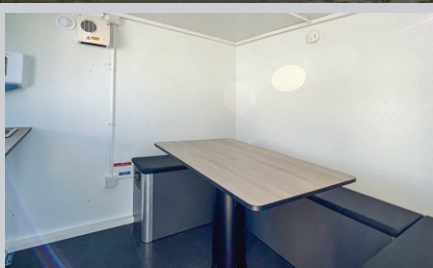
SEATS UP TO
6 PEOPLE



Securing site welfare



Well equipped canteen



Seating area



Toilet wash area



Warm Room



Delivery of hot water

Comfortable, Compact and HSE compliant.

The **groundhog** mobile GP360D is a lightweight and compact towable unit that meets HSE & CDM requirements and provides all your on-site needs in one small package.

The units are suitable for accommodating six people, which provides pleasant and safe working environments, ideal for rental companies and contractors.

Easily towed, one man operation secured and manoeuvred on site, in less than 3 minutes. Its many safety features make it a **high secure and money saving choice of welfare unit.**



Hard-wired kettle and microwave



Fully hot-dipped galvanised chassis



1kW air blown wall heater



Warm water from an on-board heating system



240V LED strip light



Compact dimensions for easy manoeuvrability on site



Welded bush for removable low level lifting eyes



Fuel Active system



Lowered & secured in 3 minutes

KEY FEATURES at a glance

For full specification, please visit
www.groundhog.co.uk



| | |
|----------------------------|----------------|
| Length | 3655 mm |
| Length (including drawbar) | 4920 mm |
| Height (on wheels) | 2.9 m |
| Height (on ground) | 2.5 m |

| | |
|-----------------------|-----------------|
| Generator | 6 kVA |
| Unladen Weight | 1700 kg |
| Possible Gross Weight | 1800 kg* |
| Solar Panel | N/A |

| | |
|------------------|-------------------|
| Fresh Water | 20 Litres |
| Waste Water | 20 Litres |
| Toilet Tank Size | 280 Litres |
| Fuel Tank Size | 58 Litres |

* Fully laden gross weight exceeds maximum towing capacity, unit should be transported to site prior to making site ready.



1 Canteen Area

- Table and bench seating for up to 6 people
- 240V 600mm strip light
- 230V 1kW air blown heater
- Warm water supplied by on-board heating system
- Large stainless steel sink c/w warm water tap
- Generator start panel c/w hour run meter
- Fresh & waste water containers (20 Ltr cap each)
- 12V pump for water system
- Carbon monoxide monitor and smoke alarm

2 Toilet Area

- Plastic recirculating toilet
- 12V LED lighting with PIR
- Forearm wash basin c/w warm water tap
- Warm water supplied by on-board heating system

3 Generator/ Warm Room

- Bulkhead light 240V
- 240V tubular heater
- Access to fuel tank with separate fuel level gauge (58 Ltr cap)
- Ventilation panel
- Fuel Active system
- Fuel tank runtime = approx. 25 hours

Secured in less than 3 minutes

Easily towed, one man operation secured and manoeuvred on site.

Fast deployment time means more time on the job, making it the money saving choice of welfare unit for rental companies and contractors.



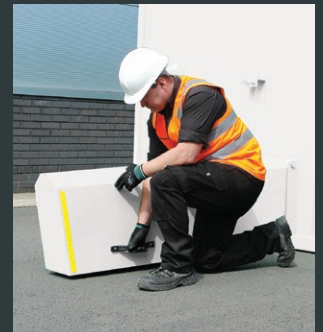
Unhitch from towing vehicle and operate hydraulics using the push button controls



Lower unit to the ground and unplug controls



Close & lock canopy to protect towing facility



0 mins

3 mins



TEL: **01639 641166** | EMAIL: sales@groundhog.co.uk
www.groundhog.co.uk
 Groundhog Ltd, Ynysgerwn Avenue, Aberdulais, Neath, SA10 8HH



Mobile Units have obtained type approval with **VCA**